

## Allison Lodge

providing specialist care and support  
to young people and adults



## Our commitment to safeguarding

---

Allison Lodge believes that every child, young person or vulnerable adult has the right to live in a manner that is free from abuse.

This document is built on that belief. Allison Lodge will work together with other agencies to uphold the rights of all those who access our services. To uphold this, we ensure that our staff are trained in recognising and dealing with incidents of abuse, which they will do with respect for confidentiality, dignity, independence and individuality of each and every person. If you are concerned about yourself or others, please speak to your Key Worker or any other member of staff. Alternatively, you can contact our office on 020 8920 7850 or [keyworkers@allisonlodge.co.uk](mailto:keyworkers@allisonlodge.co.uk).

We will treat any concerns in a fair, professional and confidential manner.

Please also visit our website at [www.allisonlodge.co.uk](http://www.allisonlodge.co.uk)

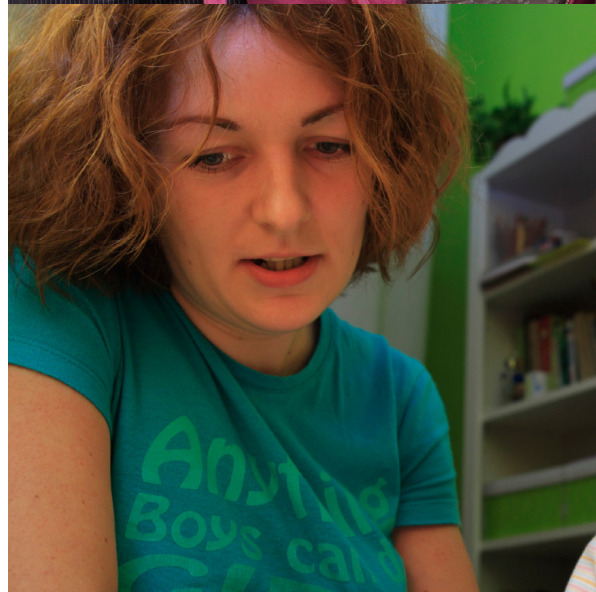


## Allison Lodge

Allison Lodge Ltd provides a range of services to children and young people. We are contracted by several Local Authorities to provide short and long term placements with accommodation and support. Allison Lodge also provides outreach services to families with multiple needs. We further provide 24hr supervised placement schemes to parents with children. These projects range from shared to individual self-contained flats. We also provide semi-independent placements with key worker support as well as 24hr supervised placements for vulnerable young people. Allison Lodge is an approved training provider for a range of CACHE, Health and Social Care Courses.

## Outreach Services

Our family outreach service has developed a holistic approach to intervention. We work with chaotic family lifestyles and specifically target the support needs of families experiencing multiple problems through the use of a dedicated key worker service. Our key workers are skilled at engaging families who are experiencing difficulties and aim to resettle parents back in the community and give them access to a wider range of other specialist support services. We further aim to give advice to parents with aspects of parenting. Our outreach programme is usually customised to each individual; we provide services within the community and within the family home.







## **Mother and baby placement schemes**

Allison Lodge provides a 24hr staffed supervised semi-independent project for parents. We provide parents and their children with a supportive and supervised living arrangement within which such parents would be required to learn parenting skills, including child development, family budgeting, health and nutrition, and other skills to promote their long-term economic independence and the well-being of their children. The overall aim of the project is for all parents to become self-sufficient and leave the project with a good range of life and social skills through our comprehensive independent living skills programmes.

The Projects are based mainly in North London. The accommodations are of good quality and are well equipped and designed to provide good safety and security.

Within all our accommodations we operate supervised contact. This is by arrangement with the placing authority. All accommodations have space to facilitate contact arrangements.

## **Facilities and services provided**

Allison Lodge provides a wide range of accommodation and facilities that are accessible by local transport services. Most of its accommodations are based in North London. All accommodations are fully equipped and furnished to a high standard.

We offer shared housing, studio, one bedroom and two bedroom flats together with 24hr supervised placements.

We offer service users the chance to live semi-independently or within a group and yet retain the opportunity for privacy.











## Healthy living

An integral aspect of our Life and Social Skills Programme is to help service users address past behaviours and improve outcomes through the introduction of individual Health Programmes including confidence building and self-esteem, dietary, cultural and nutritional needs, addressing the poor eating habits of many service users. Service users will be encouraged to prepare healthy meals under supervision from their key worker, and will be taught the importance of a healthy diet, basic food preparation and food hygiene. Service users will be encouraged to access a range of services that will support them further to achieve and maintain a healthy lifestyle.

## Education

We are committed to providing service users with educational opportunities necessary for them to develop their full potential. All service users placed with children of school age must ensure that they attend school. Allison Lodge works closely with placing authorities to promote the education of young people.

## Recreational Activities

Allison Lodge organises activities for the young people. We have links with local sports and leisure facilities. Service user will be actively encouraged to plan and participate in activities within the local community. Our staff support service user in pursuing their own hobbies and interests.



## Equality, Inclusion & Diversity

Equality, Inclusion and Diversity are core values within Allison Lodge.

Allison Lodge service users come from a wide range of cultural backgrounds and our staff reflect this diversity.

Service user's identity and culture will be valued and respected.

We will make every effort to help all our service users reach their full potential.

Staff and service users can expect environment that is free from discrimination, victimisation, harassment, and bullying.

Allison Lodge is committed to safeguarding and promoting the welfare of children, young people, and vulnerable adults, and as such, we expect all those who access our services to share this commitment. We engage with all our service users and staff in the development of our policies, practices and we seek to encourage their feedback.

### Head Office

South Point House, 321 Chase Road, Southgate, London N14 6JT  
t: 020 8920 7850 e: [info@allisonlodge.co.uk](mailto:info@allisonlodge.co.uk) w: [www.allisonlodge.co.uk](http://www.allisonlodge.co.uk)